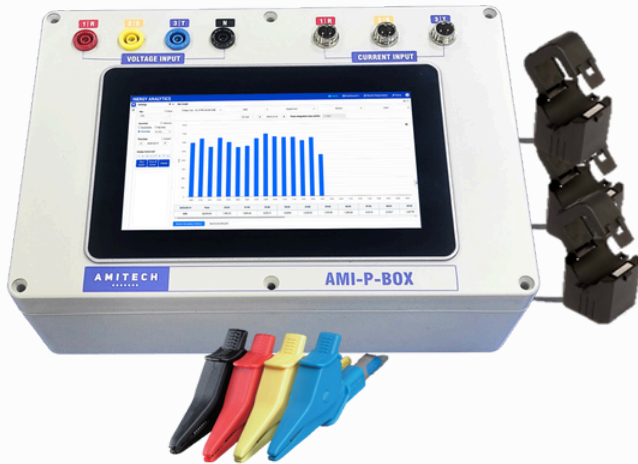


# AMI-P-BOX

## CATALOG

### Portable power monitor box



## Features

- Portable Power Analyzer
- Compact design for easy portability
- Easy to install and operate
- Remote monitoring via Wifi, LAN
- Touch screen for easy monitoring and analysis

## Specifications

### General

<b>Dimensions (W x D x H)</b>	263 x 185 x 95mm
<b>Enclosure</b>	Plastic case
<b>Weight (Net)</b>	Single stack:1.5kg (3.09lbs)
<b>Power Requirement</b>	220V
<b>Power Consumption</b>	20.2W (Typical)
<b>OS Support</b>	linux-AMI EMS Analytics

### System Hardware

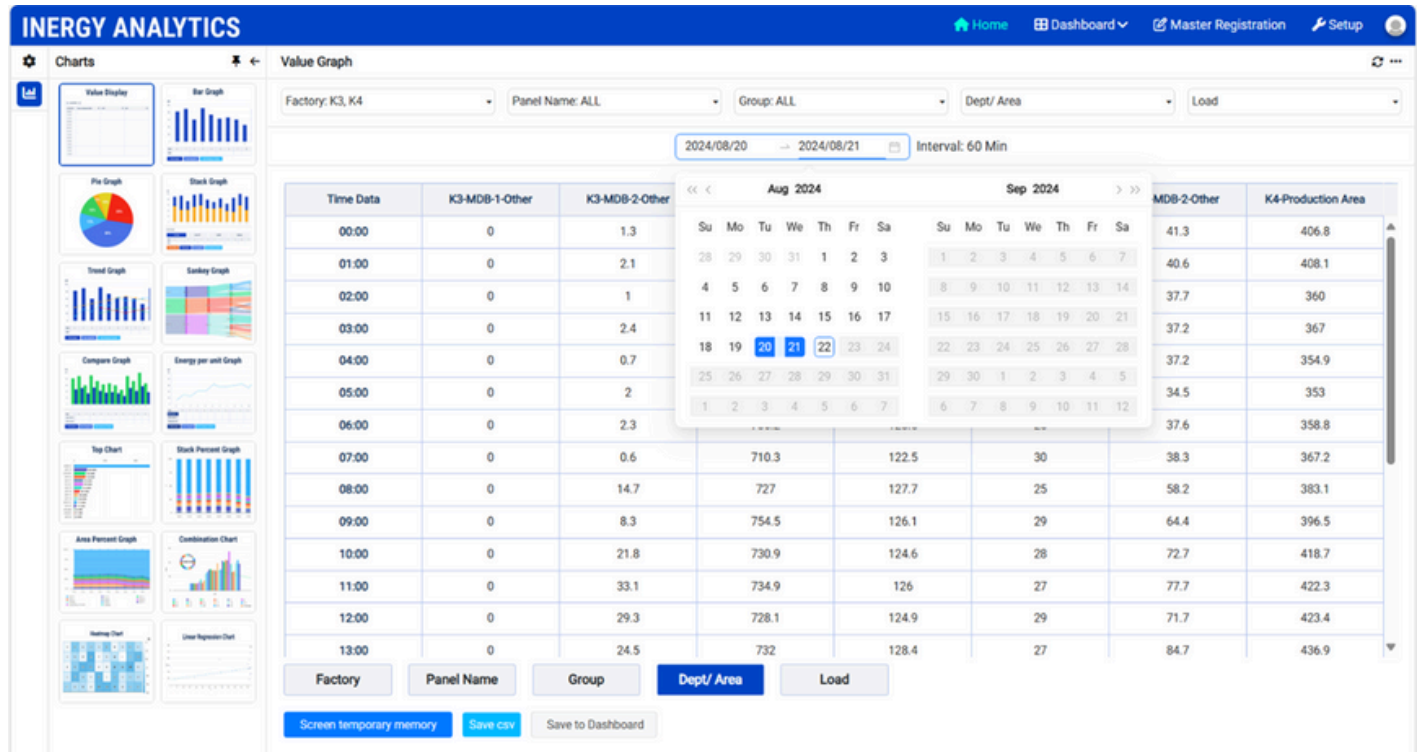
<b>CPU</b>	Intel Baytrail-D Celeron J1900
<b>Storage</b>	SSD 256G
<b>Processor</b>	2.0~2.42GHz, 4cores, 4threads, 2M cache
<b>Graphics Display</b>	7inch TFT LED Panel
<b>Touchscreen</b>	Projected Capacitive Touch
<b>Ethernet</b>	Intel i211 10/100/1000Mbps Ethernet
<b>Wifi</b>	Wifi 2.4G/5G
<b>Operating Temperature</b>	-10°C ~ 60°C (14~ 140 °F) (extend temperature optional)

### Power meter

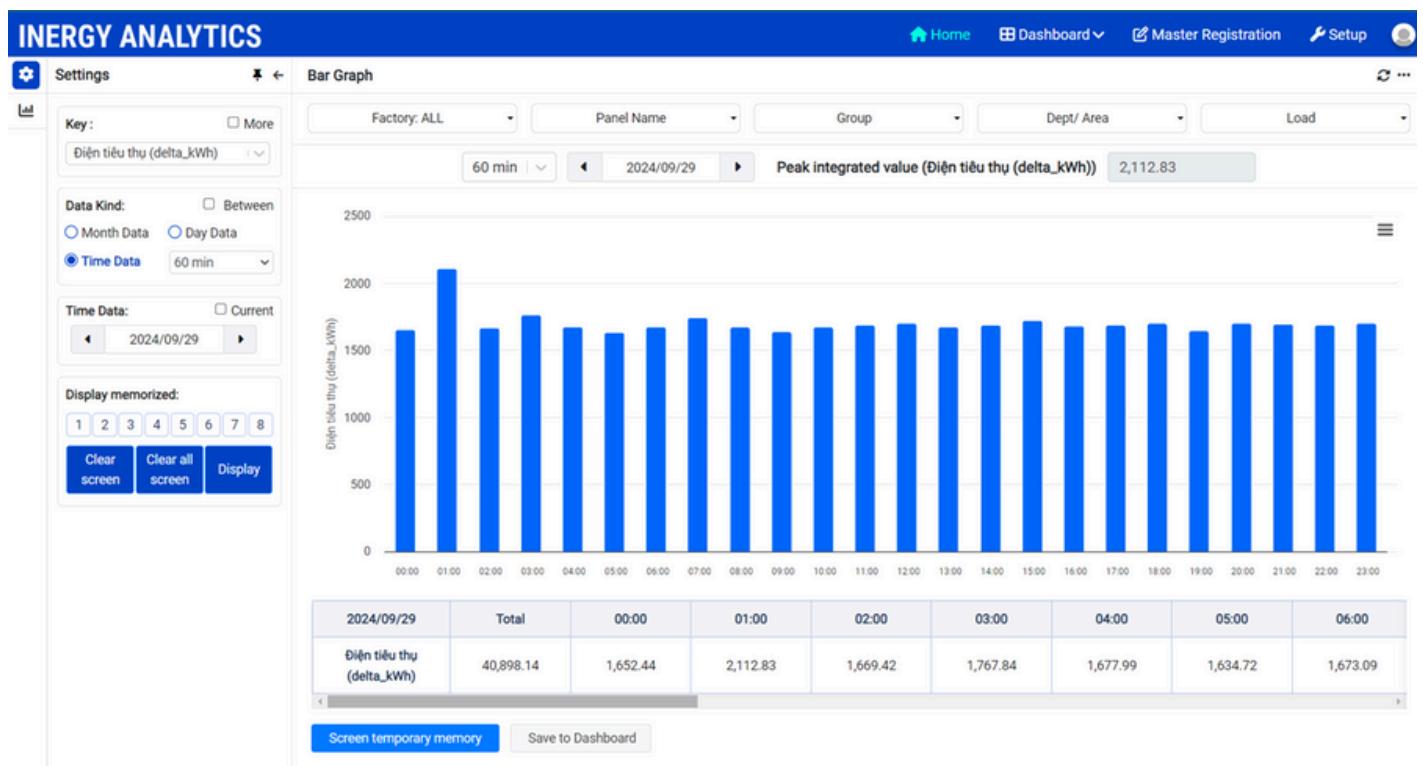
<b>Phase wire system</b>	3-phase 4-wire, 3-phase 3-wire (3CT, 2CT), 1-phase 3-wire, 1-phase 2-wire
<b>Frequency</b>	50/60 Hz
<b>Measuring element</b>	Current (A), Voltage (V), Active power (W), Reactive power (var), Apparent power (VA), Power factor (PF), Frequency (Hz), Active energy (Wh), Reactive energy (varh), Apparent energy (VAh), Harmonic current (HI), Harmonic voltage (HV)
<b>Class</b>	±0.1% (A), ±0.2%(V,kW,PF), Class 0.5S (IEC62053-22) (Wh)
<b>Current transformer(CT)</b>	3x100A/1A
<b>Voltage Connector</b>	4 wires

## Software

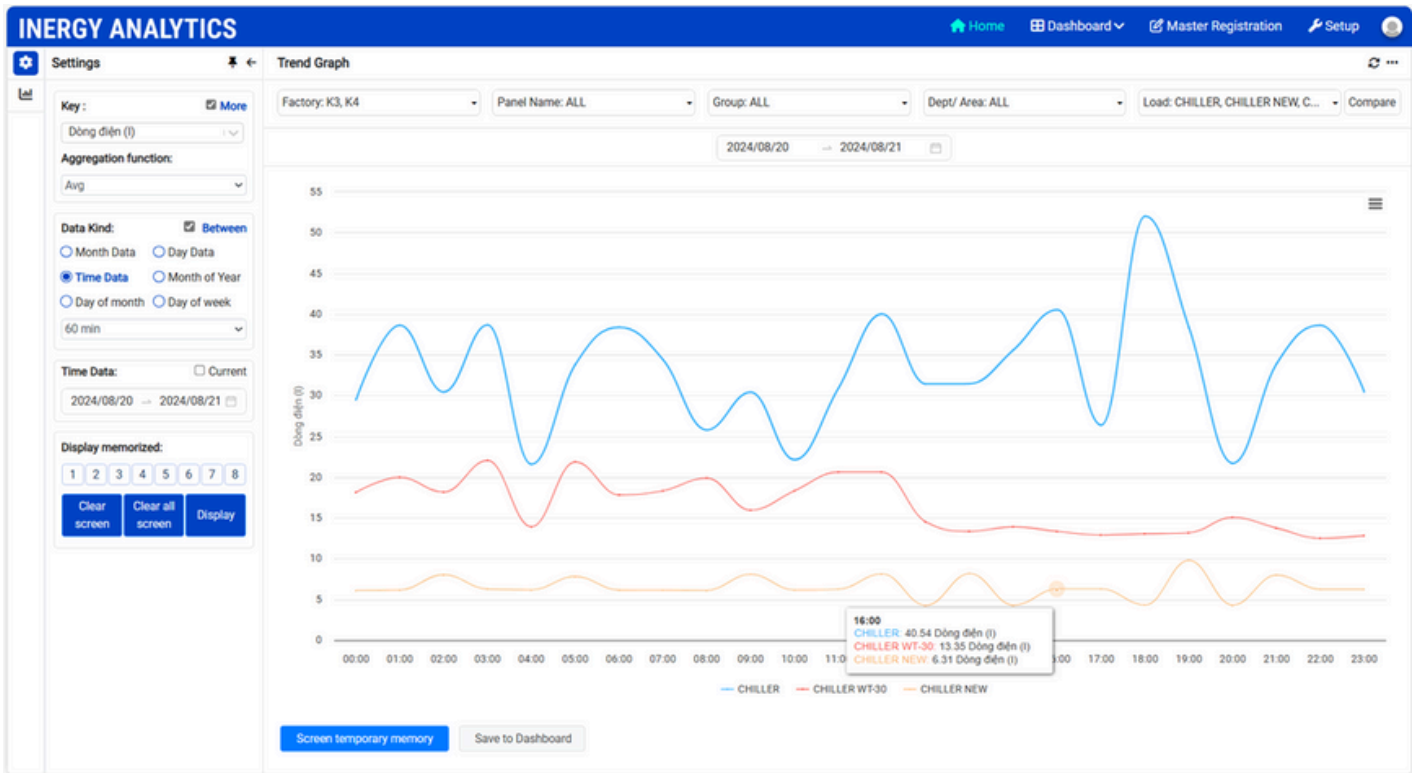
- View data analysis in table format, easily track and retrieve summary reports by day, month, and year



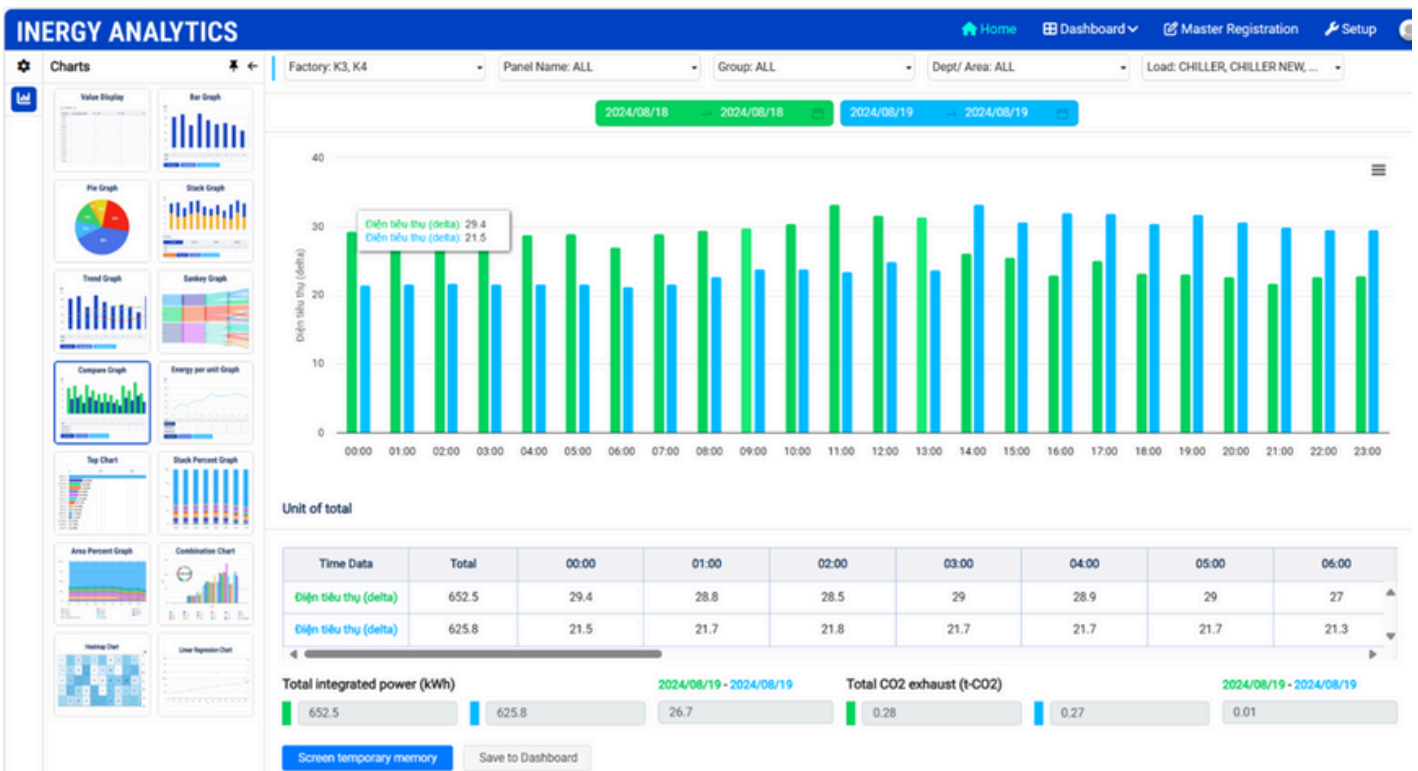
- View data analysis in column format for total energy consumption, easily identify abnormal data over time



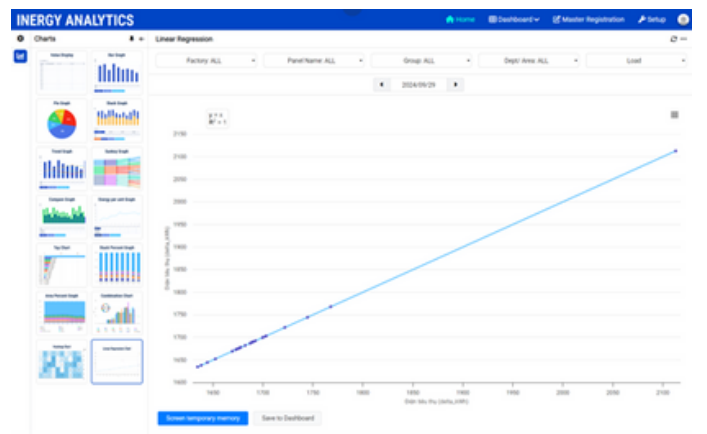
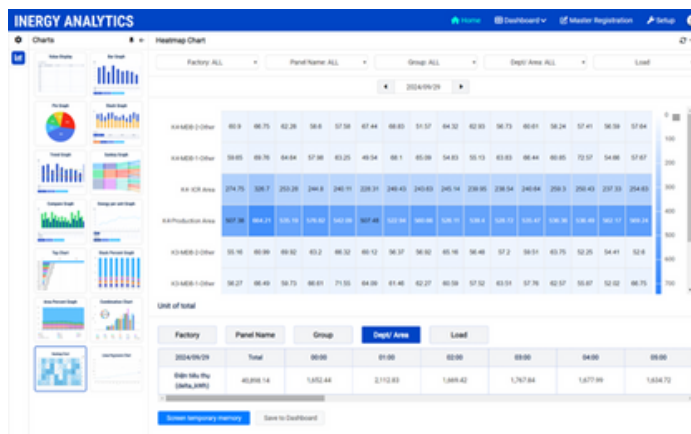
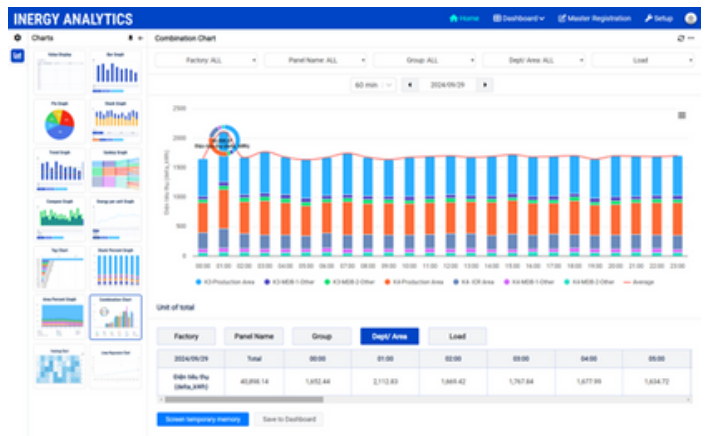
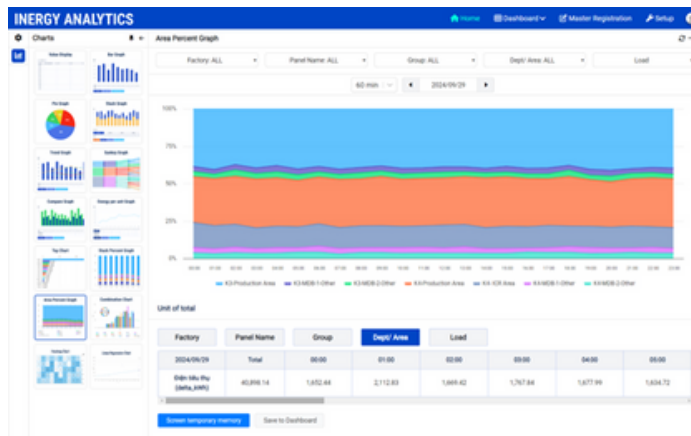
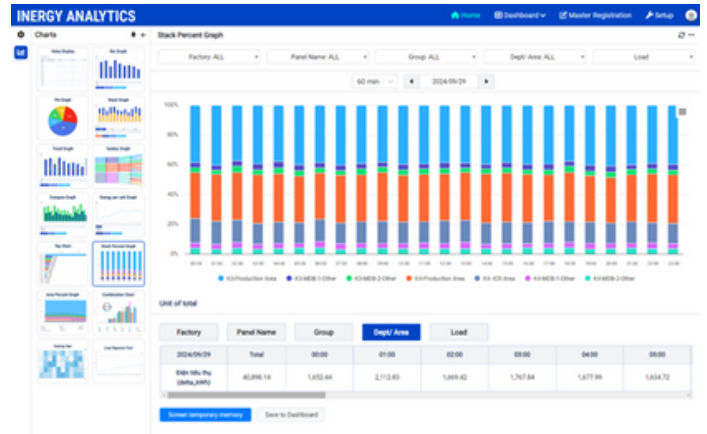
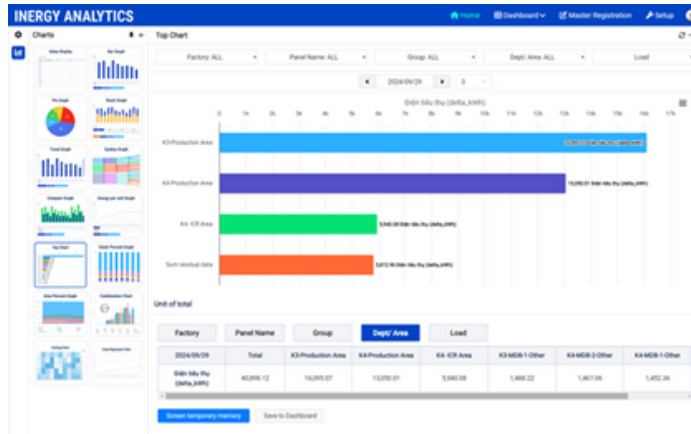
- View data analysis of other energy indicators in line chart format, identifying anomalies in energy metrics (current, voltage, power factor, flow rate, etc.)



- Compare and perform multidimensional analysis between loads, areas, or the same load on different days to identify anomalies in energy usage



- And many other tools to help managers analyze and develop solutions for efficient and cost-effective energy usage



## Dimensions

### AMI-P-BOX

